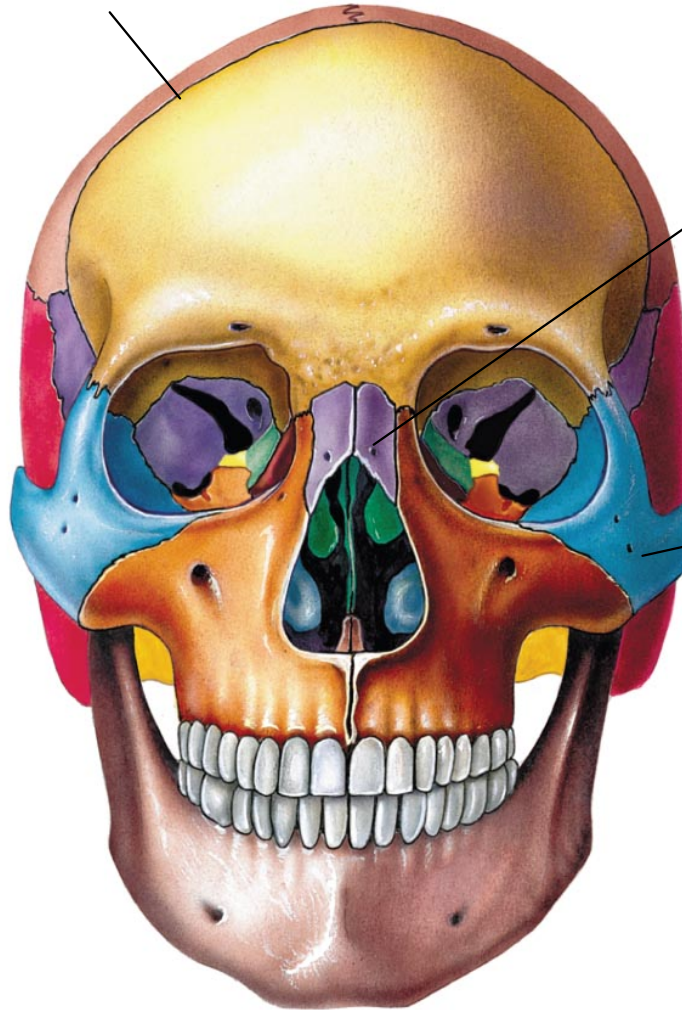


Label: nasal bone, zygomatic bone, coronal (frontal) suture on this diagram

Coronal suture

Nasal bone

Zygomatic bone



Anterior view of skull

Posterior View of Skull—
label ONLY visible sutures
on this diagram

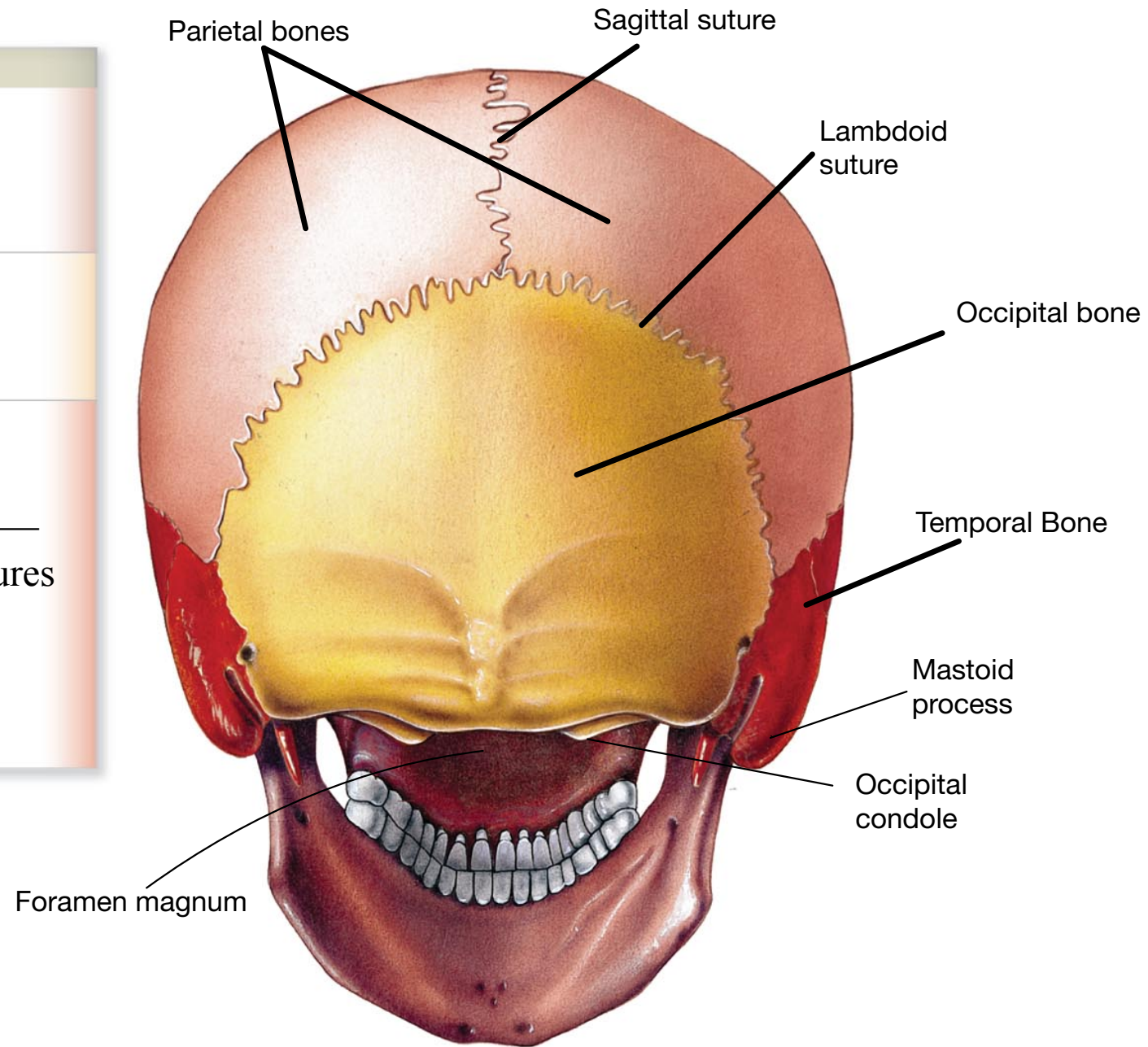


Figure 7.2

Lateral View of Skull—
LABEL: SPHENOID
BONE, ZYGOMATIC
BONE, ZYGOMATIC
PROCESS, MASTOID
PROCESS, EXTERNAL
ACOUSTIC MEATUS
AND
TEMPOROMANDIBUL
AR JOINT on this
diagram

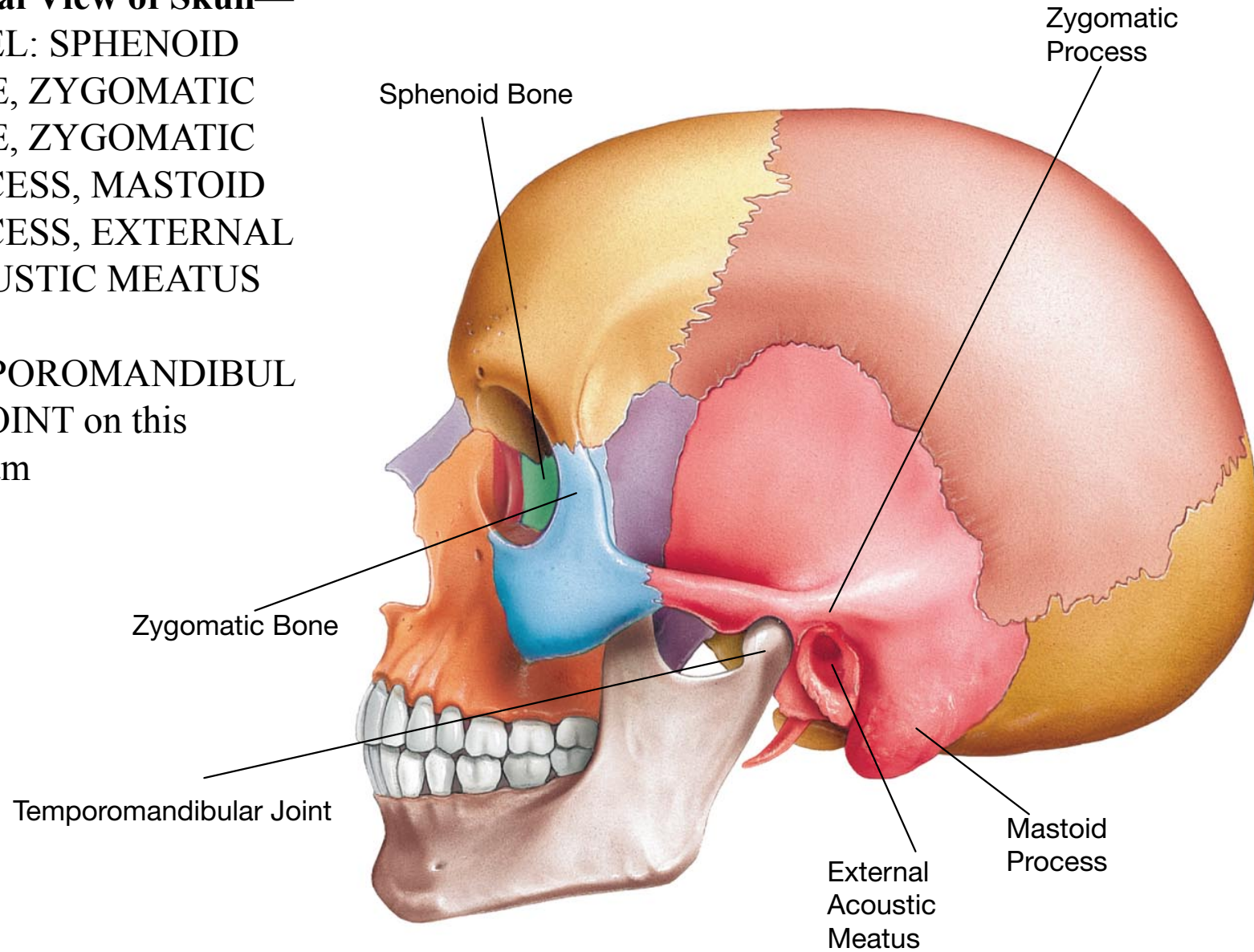


Figure 7.3

**Inferior View of Skull—
LABEL ONLY PALATINE
BONE, FORAMEN
MAGNUM AND
OCCIPITAL CONDYLES
on this diagram**

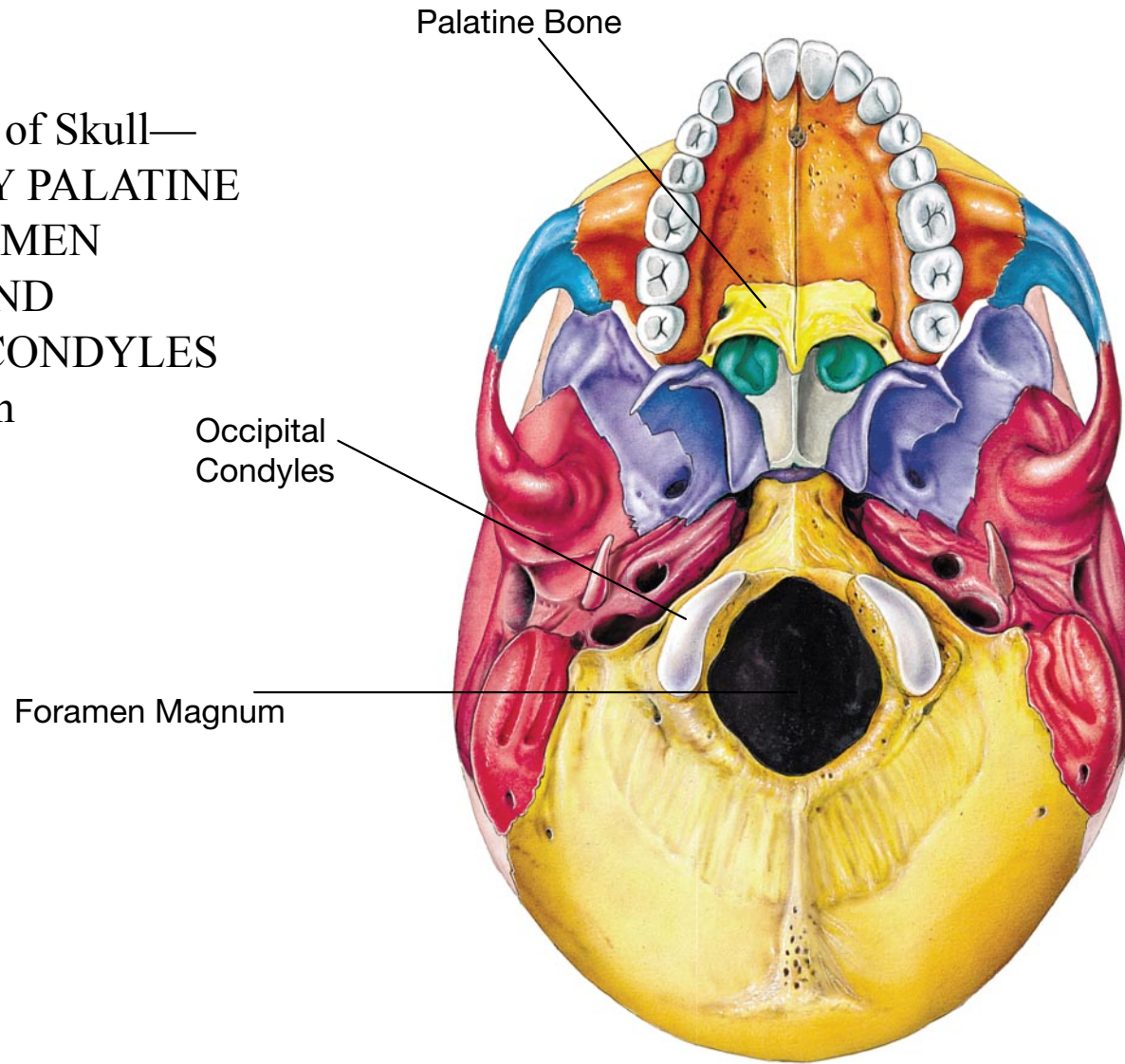
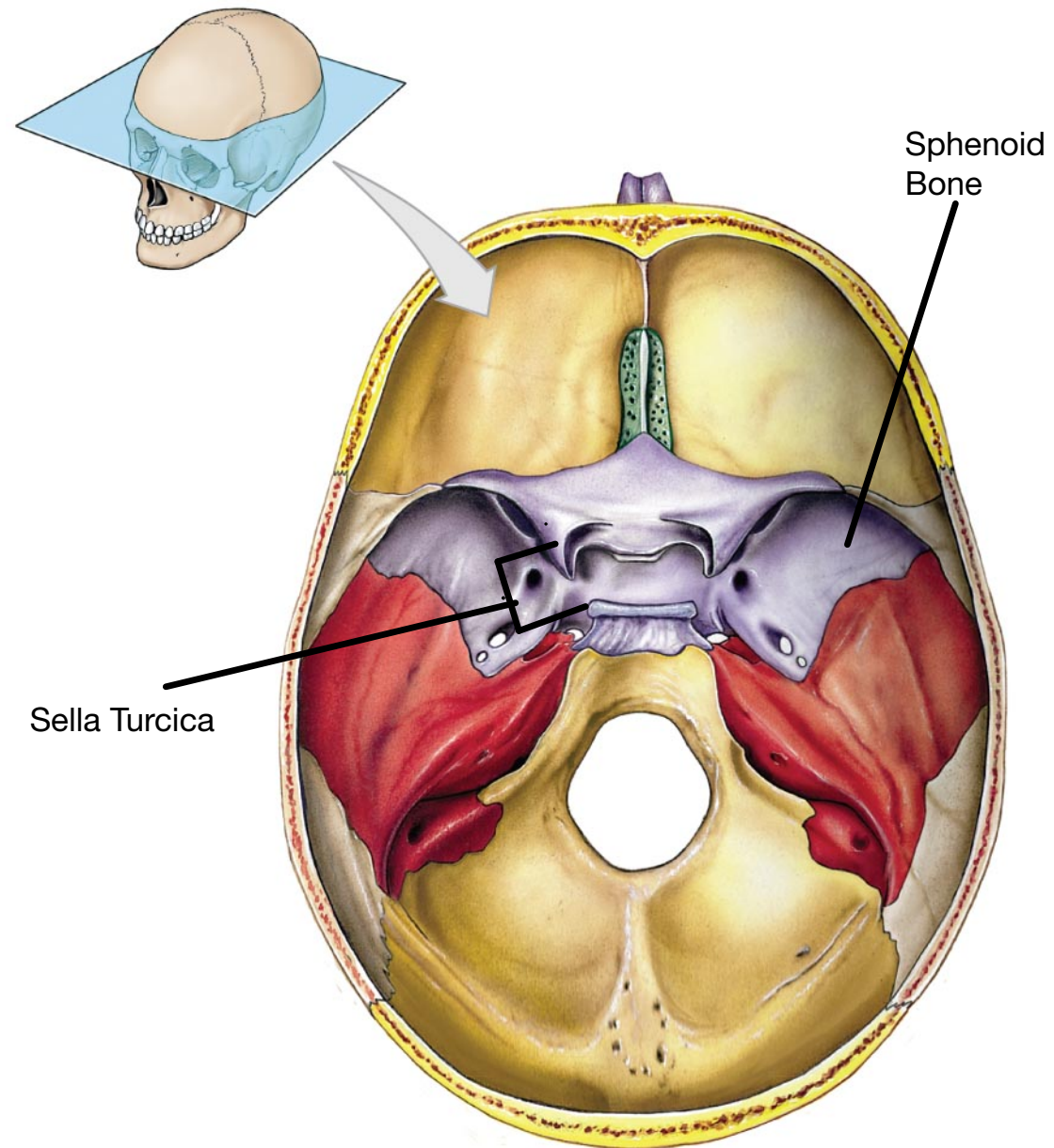


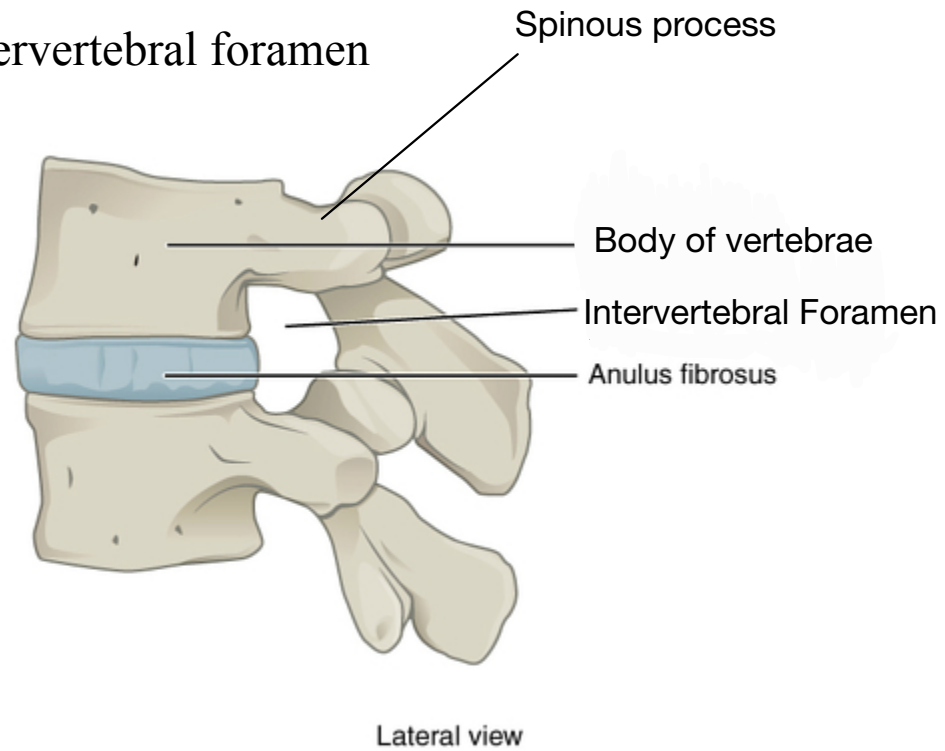
Figure 7.4

Superior View of
Skull with top
removed—LABEL
**ONLY SPHENOID
BONE AND SELLA
TURCICA ON THIS
DIAGRAM**



Label:

Body of vertebrae, spinous process and intervertebral foramen



Label: body of vertebrae, vertebral foramen,
transverse process, spinous process

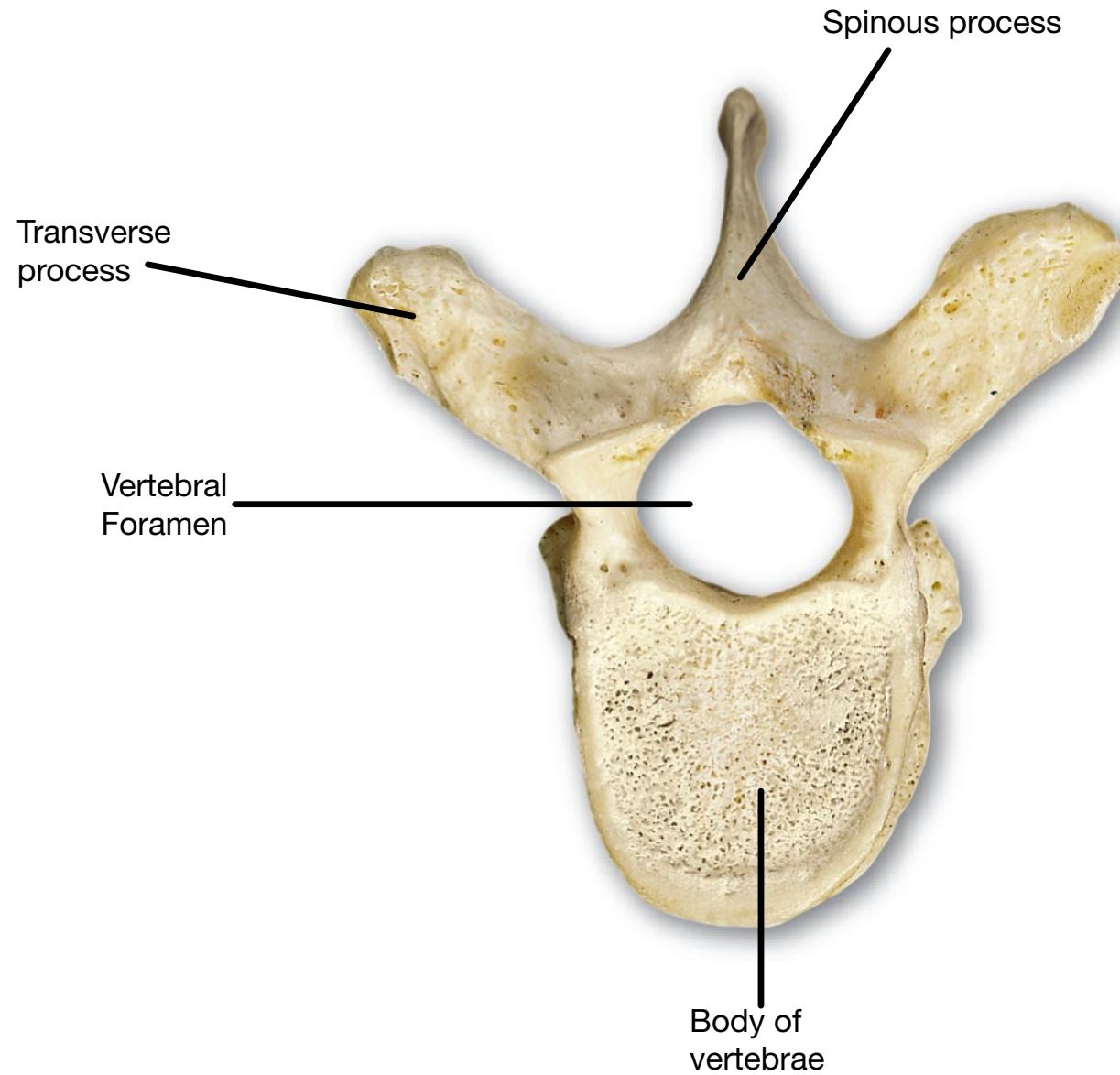
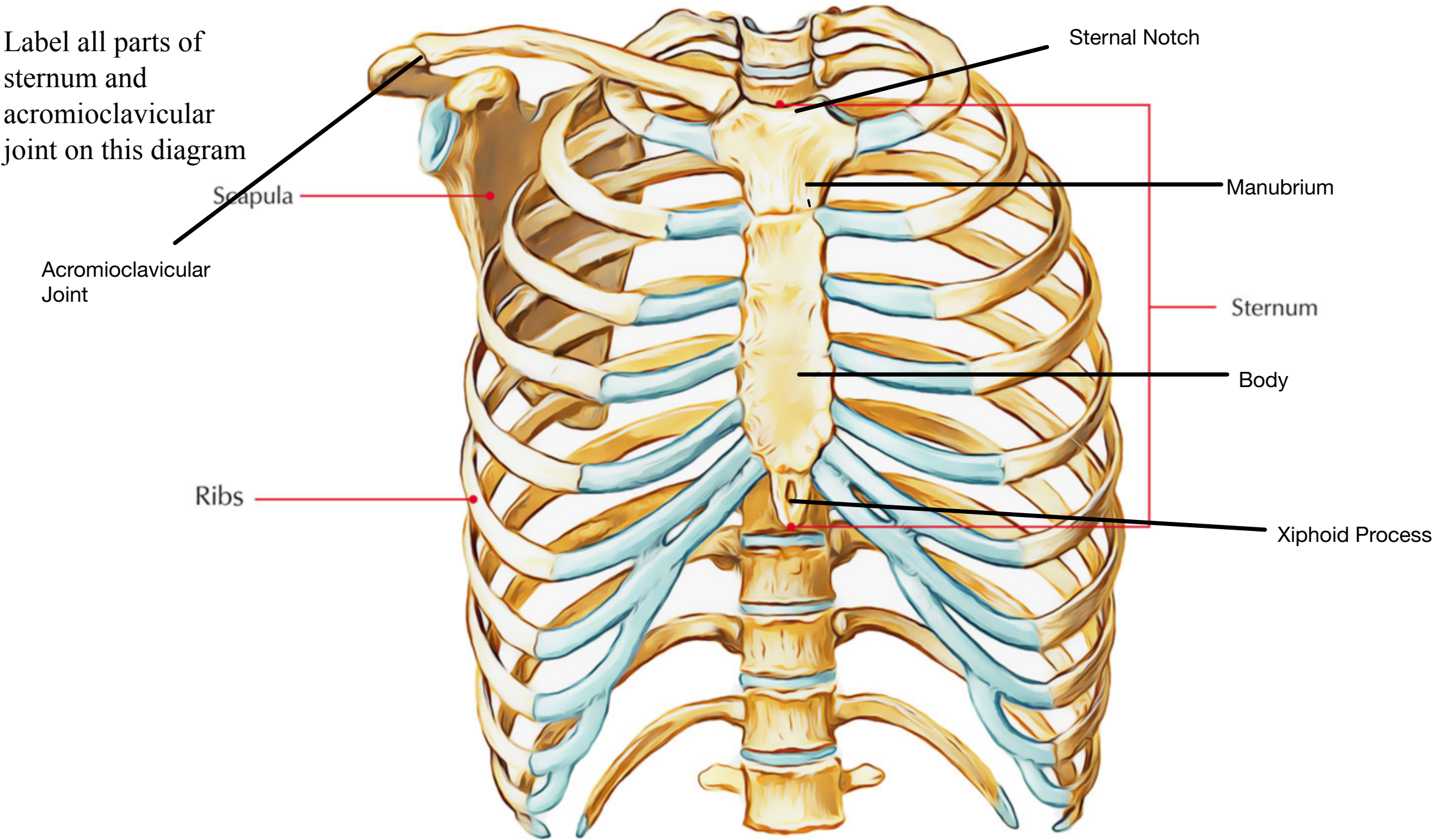
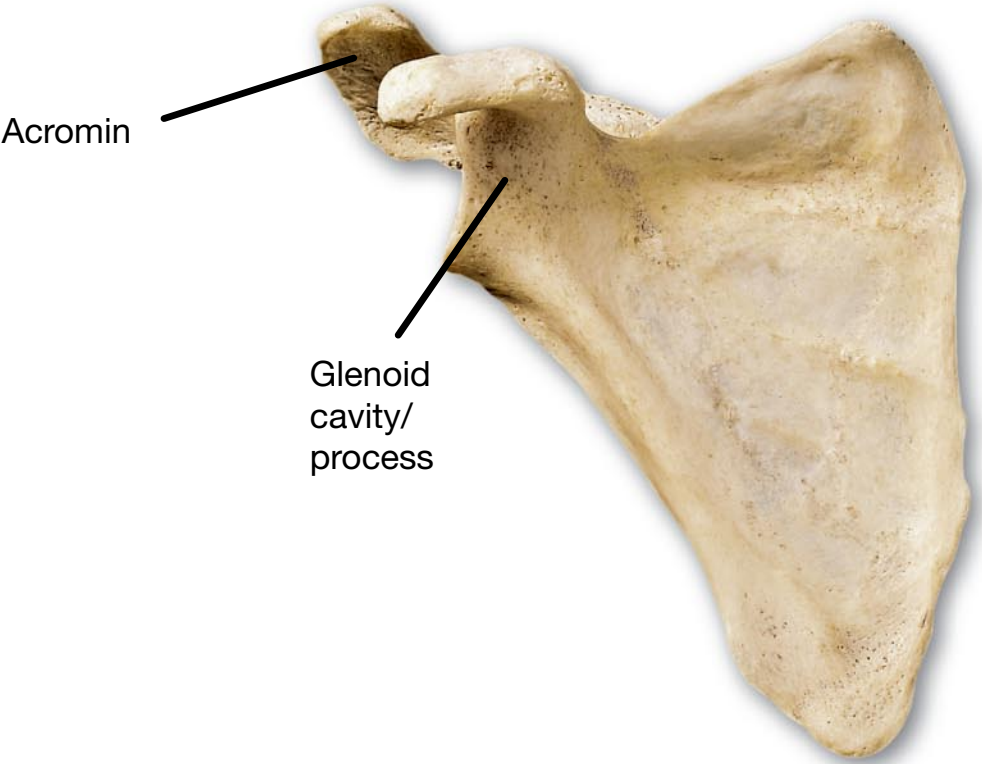
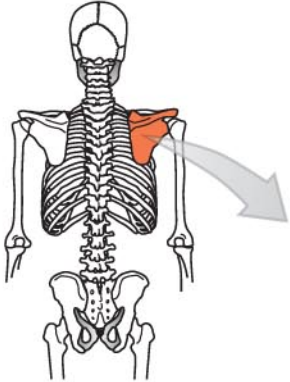
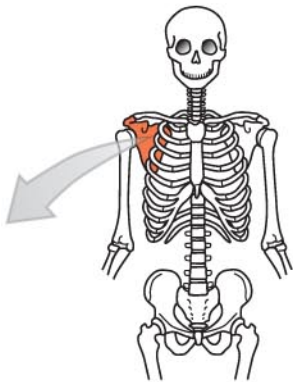


Figure 7.10

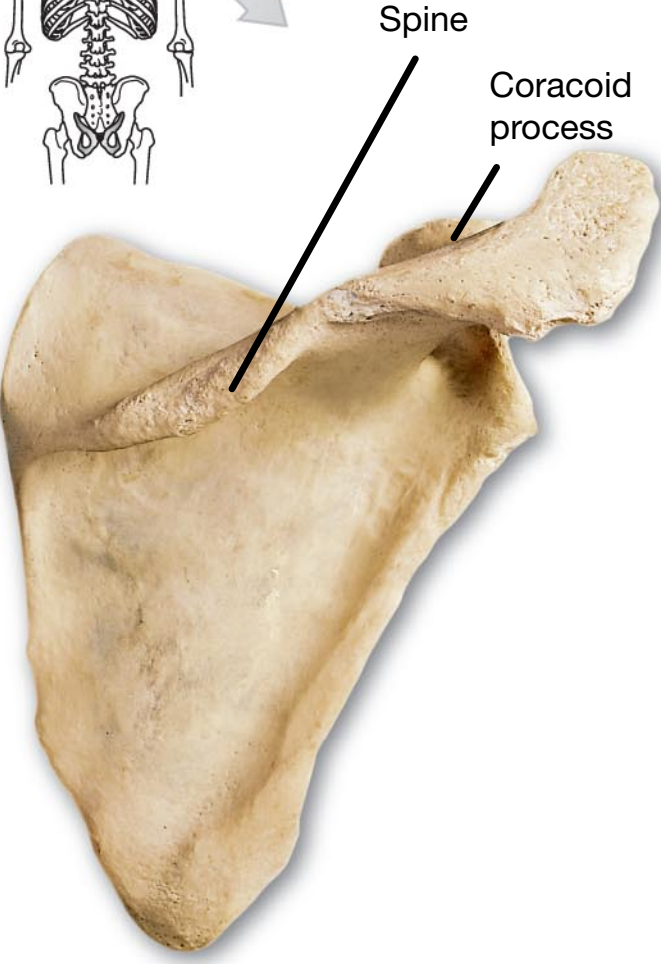
Label all parts of
sternum and
acromioclavicular
joint on this diagram



Label all scapula structures on this diagram

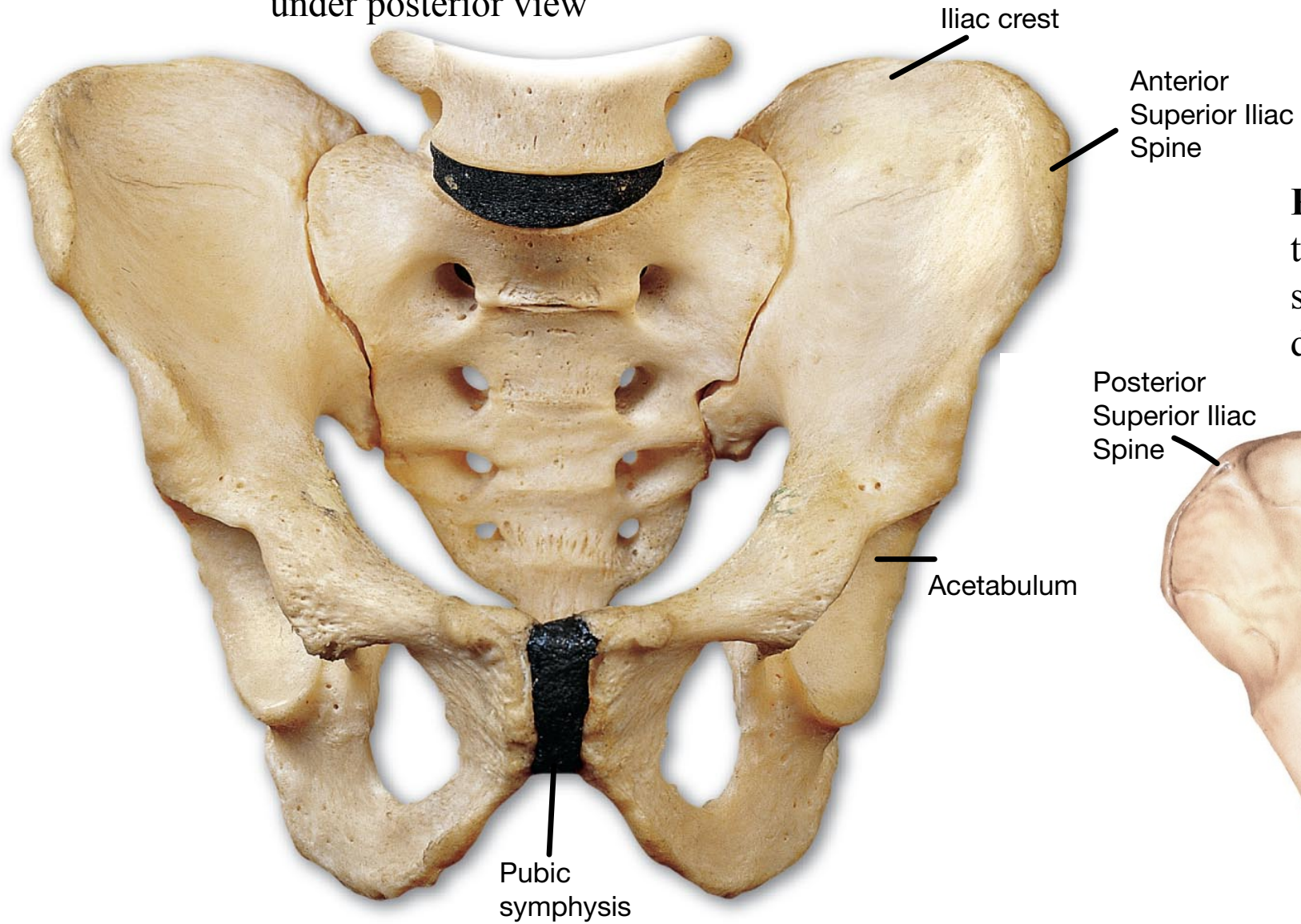


Anterior view

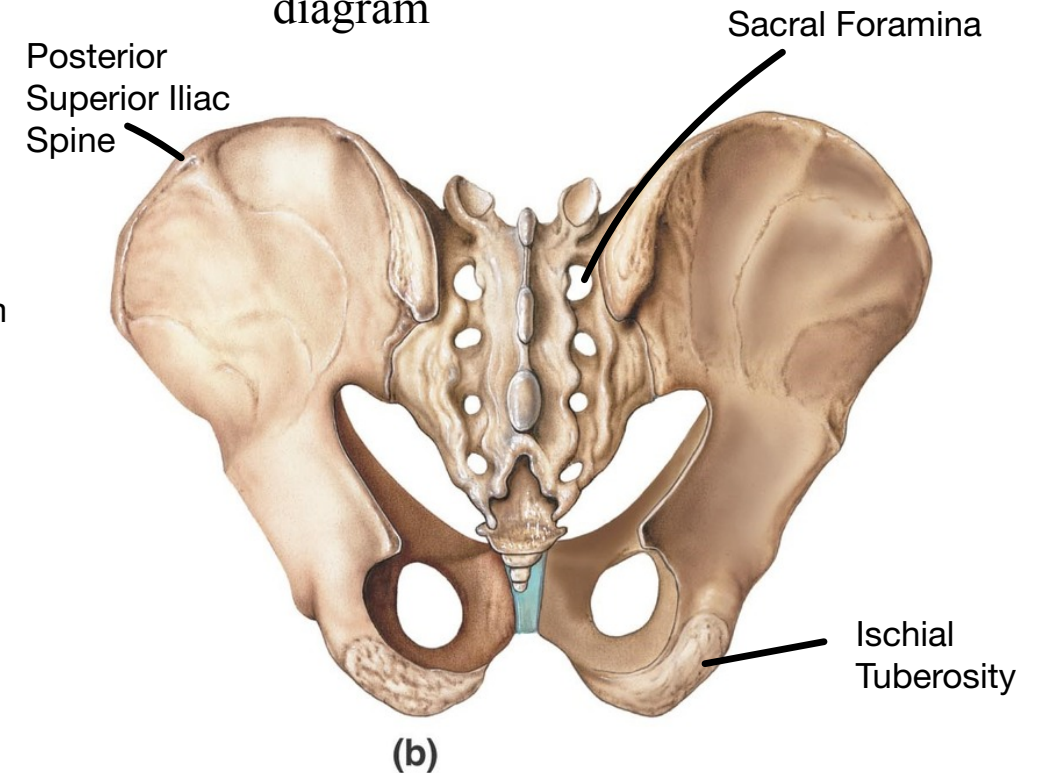


Posterior view

ANTERIOR VIEW—label all pelvis structures **except** those listed under posterior view



Posterior view—Label ONLY ischial tuberosity, posterior superior iliac spine and sacral foramina on this diagram



Copyright © 2009 Pearson Education, Inc., publishing as Pearson Benjamin Cummings.

Figure 7.17